



FOUNDER

How to Manage Cloud License

May 1, 2017

www.foundereagle.com

Founder Information Industry is a leader in the information technology, providing comprehensive solutions, including IT services, software, hardware, and data operation.

Beijing Founder Electronics CO., Ltd.

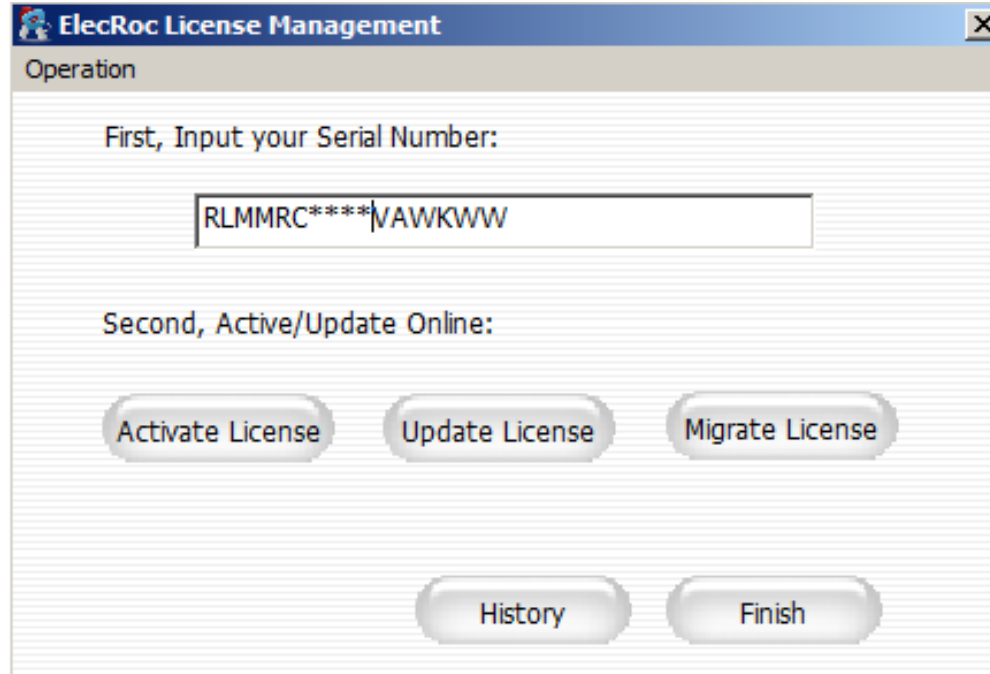
Founder software applications, such as ElecRoc6, EagleRIP Flexo and RealDot Viewer are authorized by BitAnswer Cloud Licensing Technology.

- **License Management Utility** is a tool to manage the cloud license via serial number.
- **Activate License** is to activate the cloud license.
- **Update License** is to add modules or extend time.
- **Migrate License** is to release the SN and activate on another computer.
- **Note:**
 1. *One cloud license is only used on one computer at one time.*
 2. *If the license is to be activated on another computer, the license must be released first.*
 3. *The license will not be released automatically by uninstalling the software.*
 4. *Any further question, please contact Founder for help.*

- [Start License Management Utility](#)
- [Activate License](#)
- [Update License](#)
- [Migrate License](#)

Start License Management Utility

- Run the **License Management Utility** tool from **Start** menu of Windows.
(Sample image shows ElecRoc' s)
- Input serial number into the edit box.
(Serial number is provided by your local dealer or Founder)



- Cloud License can be managed either online or offline.

Activate License

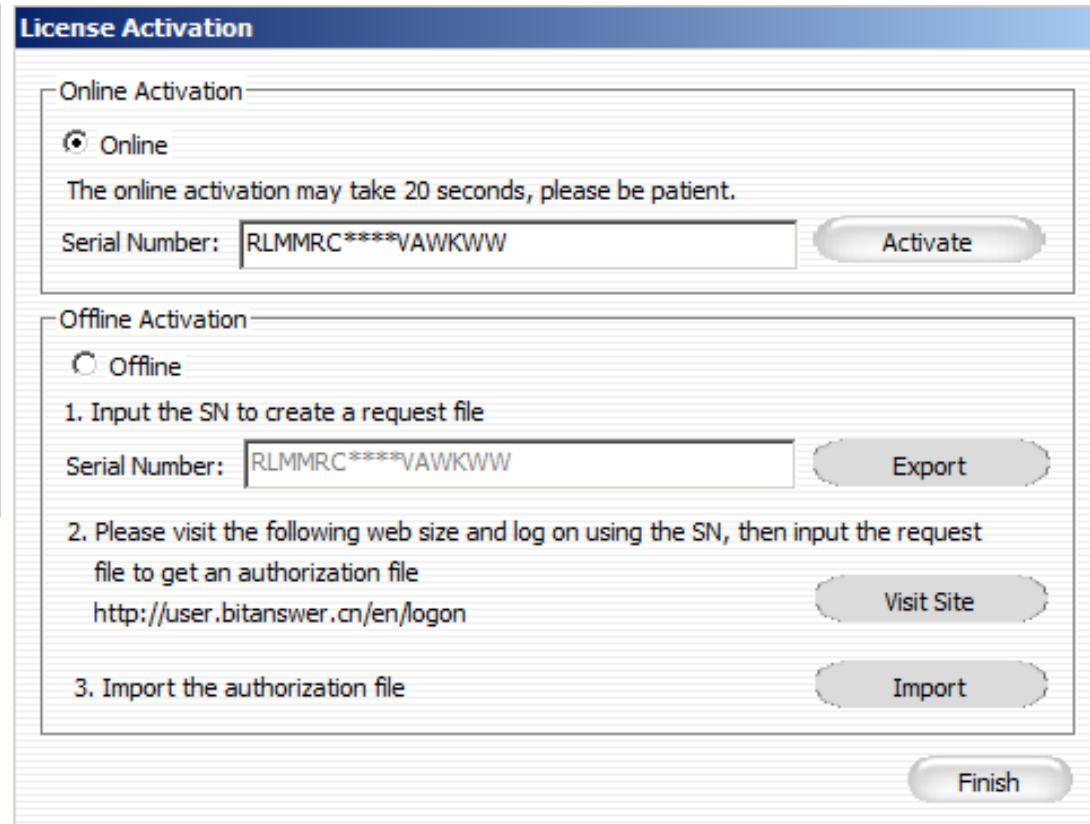
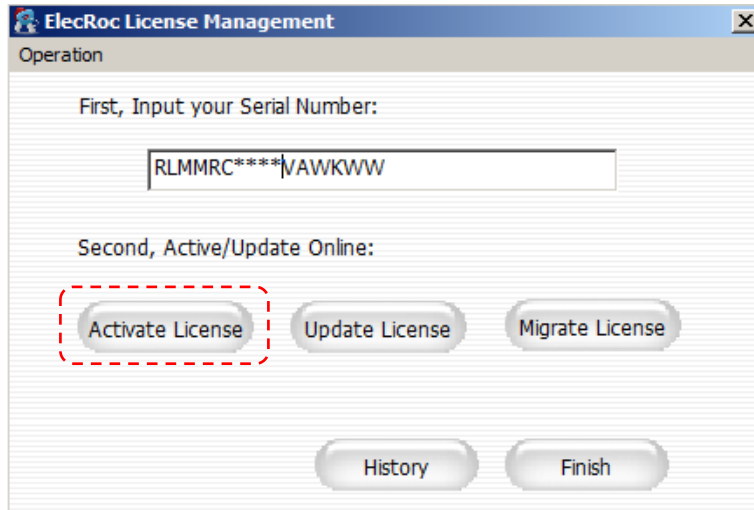
Online activation

- If the computer connects to the Internet through the proxy server, click **Operation > Configuration > Proxy Server**, and set the proxy server information as follow.

The screenshot shows a 'Configuration' dialog box with two main sections: 'Proxy Server' and 'Local Server IP:'.
In the 'Proxy Server' section, the 'Enable Proxy Server' checkbox is checked. The 'Address' field contains 'ProxyServer', the 'Port' field contains '80', the 'User' field contains 'UserName', and the 'Password' field contains '*****'.
In the 'Local Server IP:' section, the checkbox 'Use a specific IPv4 address if your server computer has more than one IPv4 address and the default one is not you want to use' is unchecked. The 'IP Address' field is empty, and the 'Port' field contains '7910'.
At the bottom right, there are 'OK' and 'Cancel' buttons.

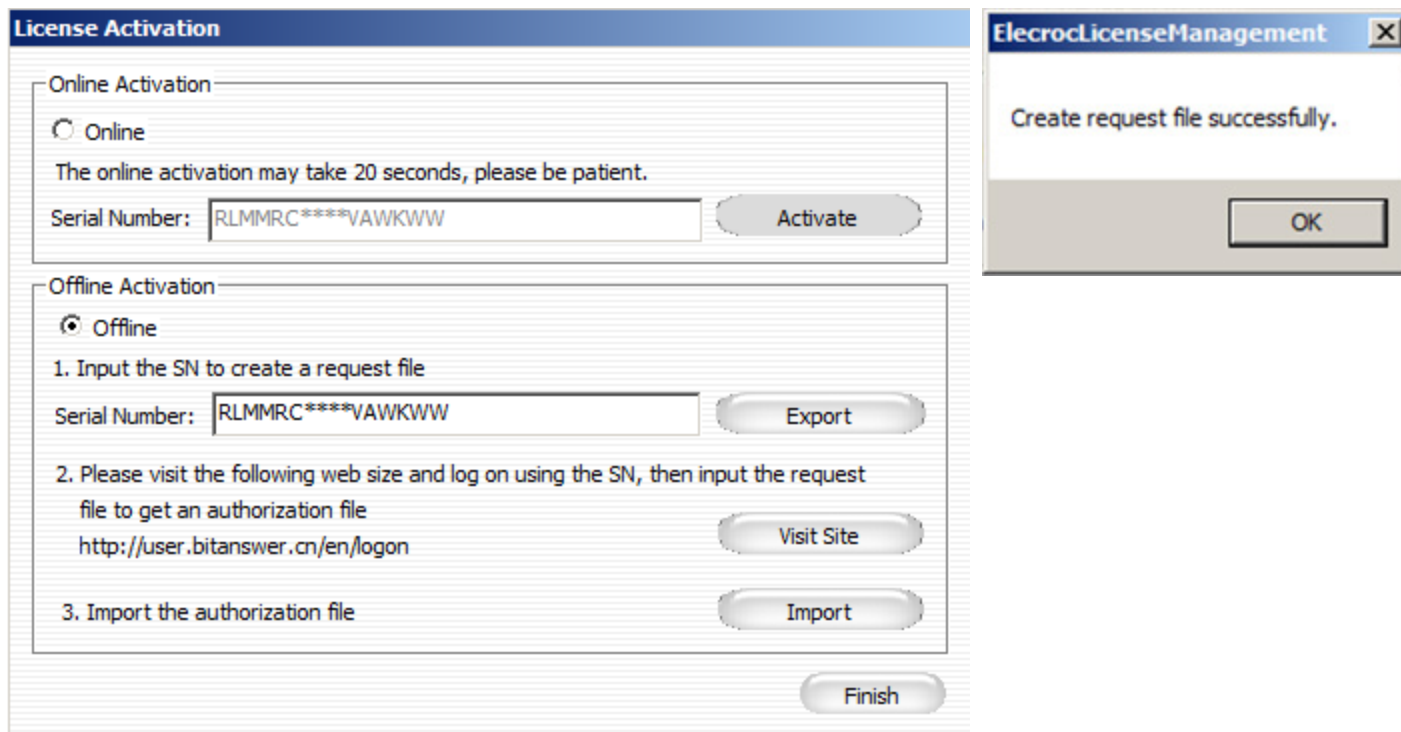
Activate License

- Click **Activate License** , select **Online** , and then click **Activate**

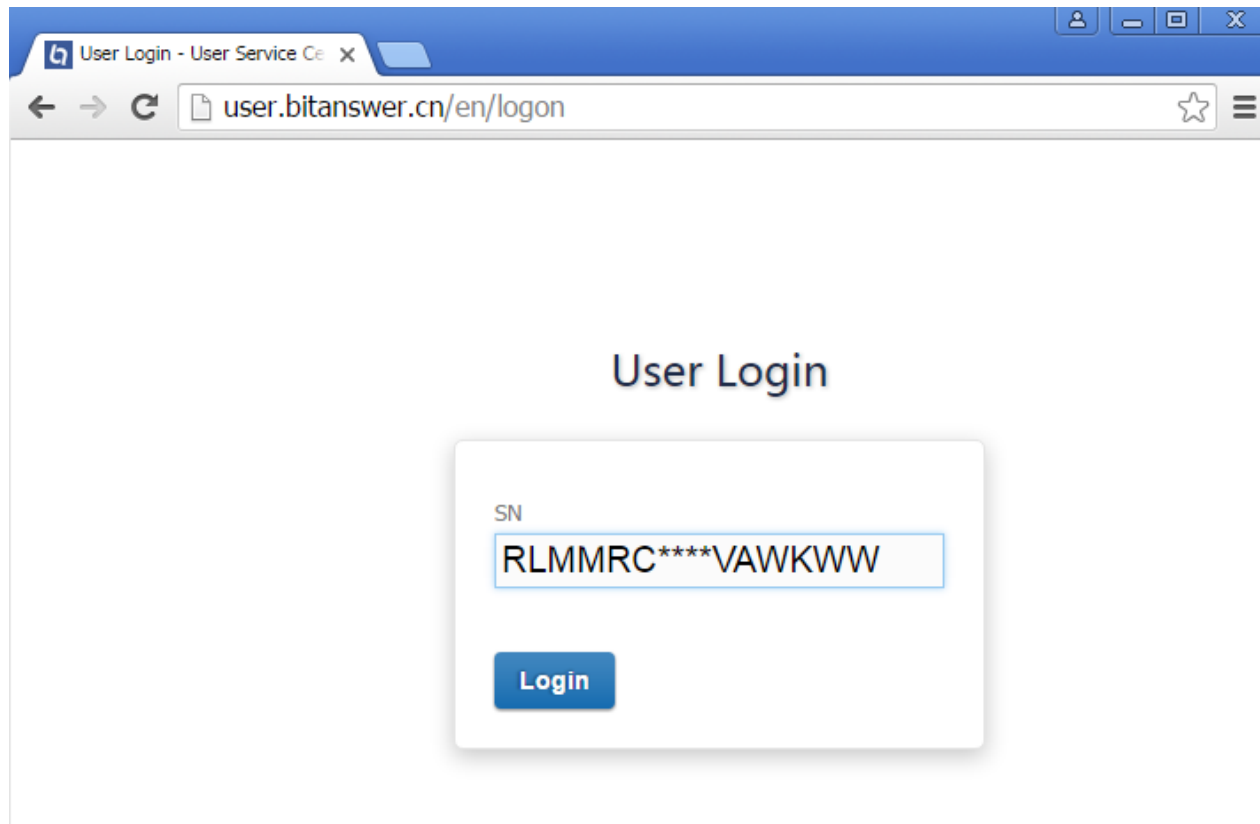


Offline activation

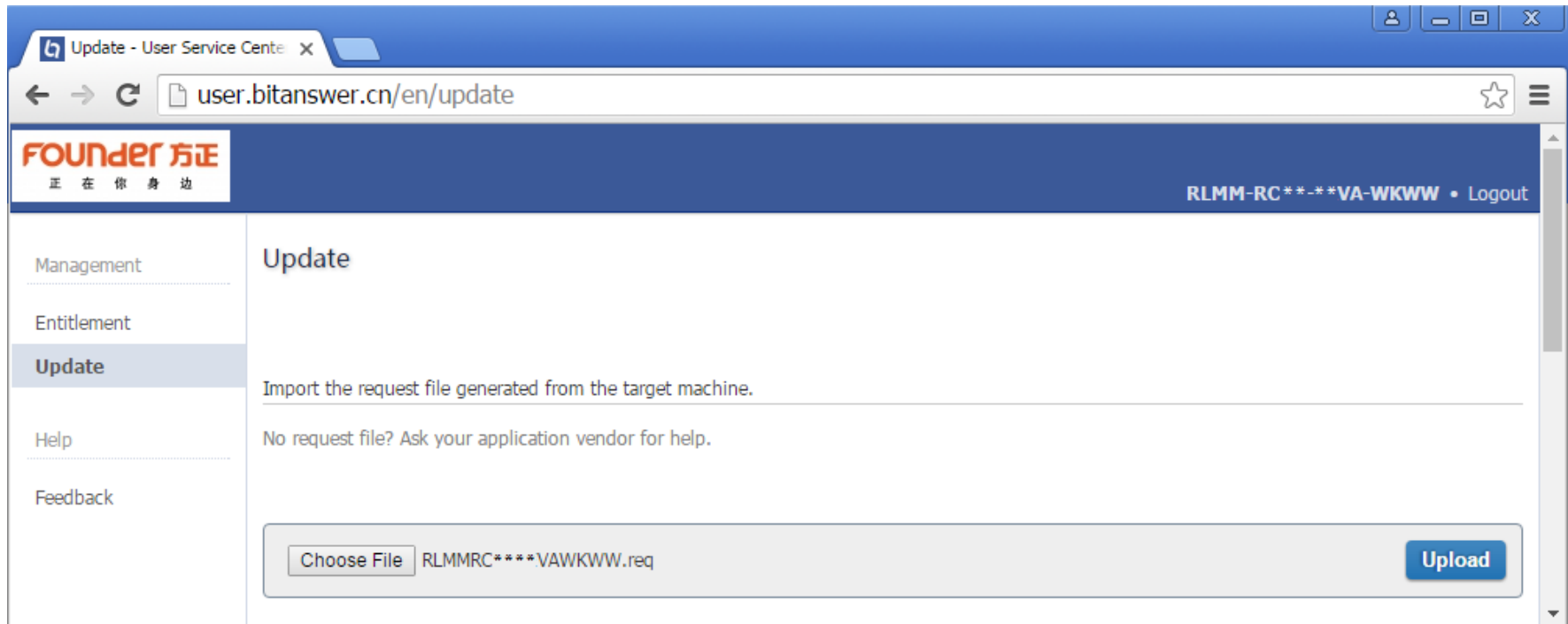
- If the computer doesn't connect to the Internet, select **Offline** , and then follow the next steps.
- Step 1. Click **Export** to create a .reg file, copy this file to the computer which is connected to the Internet.



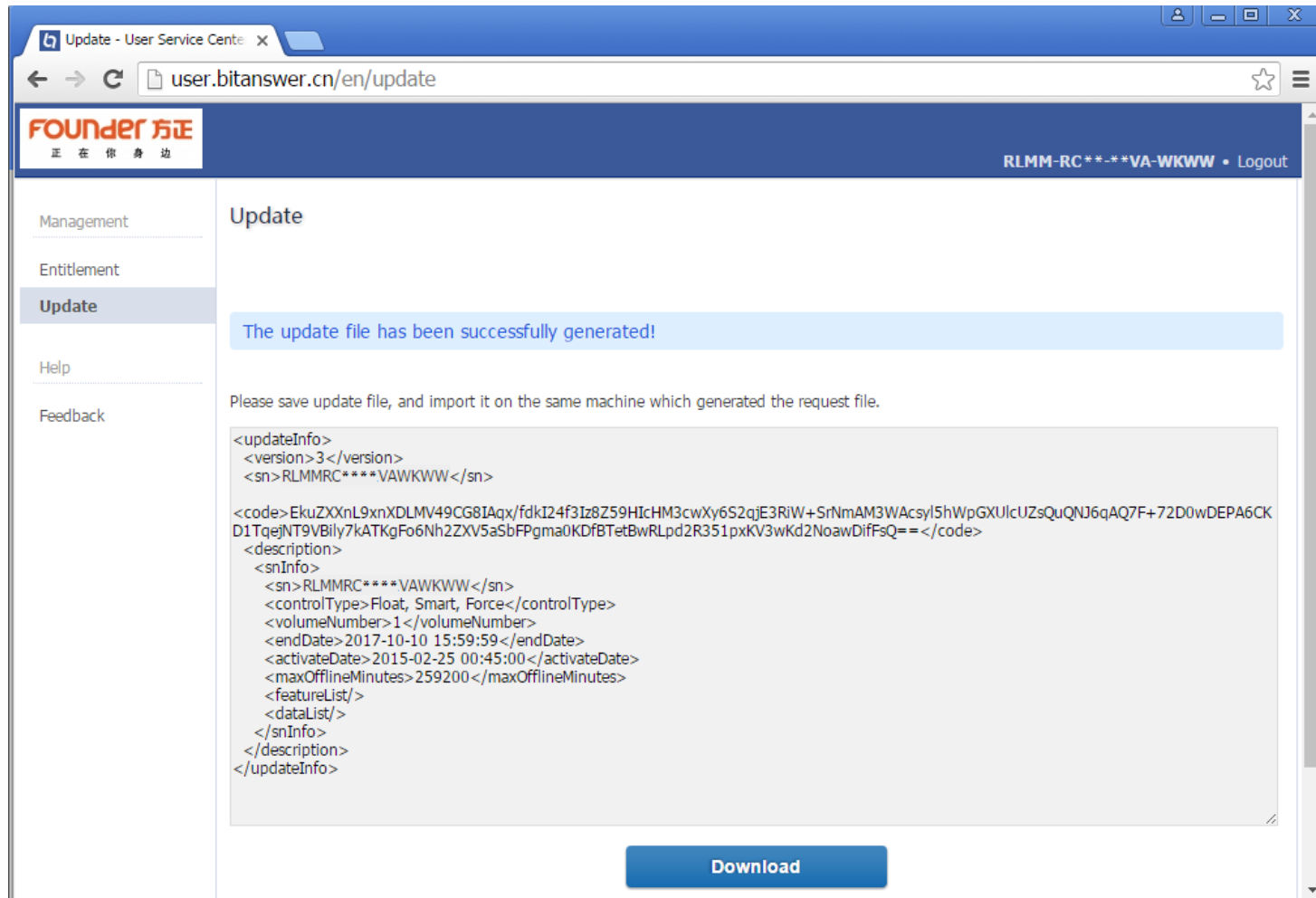
- Step 2. Go to <http://user.bitanswer.cn/en/logon>, input the serial number, and click **Login**.



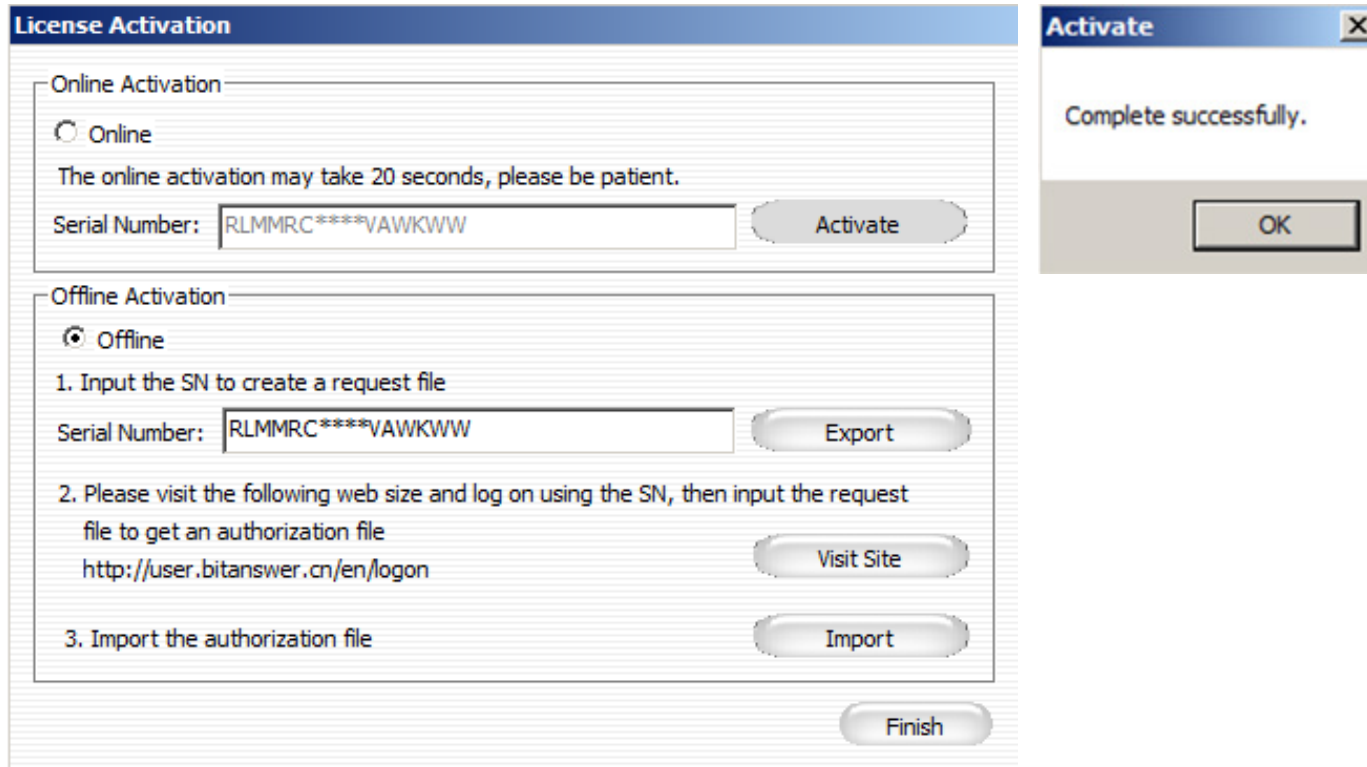
- Step 3. Click **Update**, click **Choose File** button to select the .reg file, and then click **Upload**.



- Step 4. The update result will be appeared. Click **Download**, save the .upd file, and then copy this file back to the offline computer.



- Step 5. Go to the offline computer, click **Import**, select the .upd file, the activation will be complete.

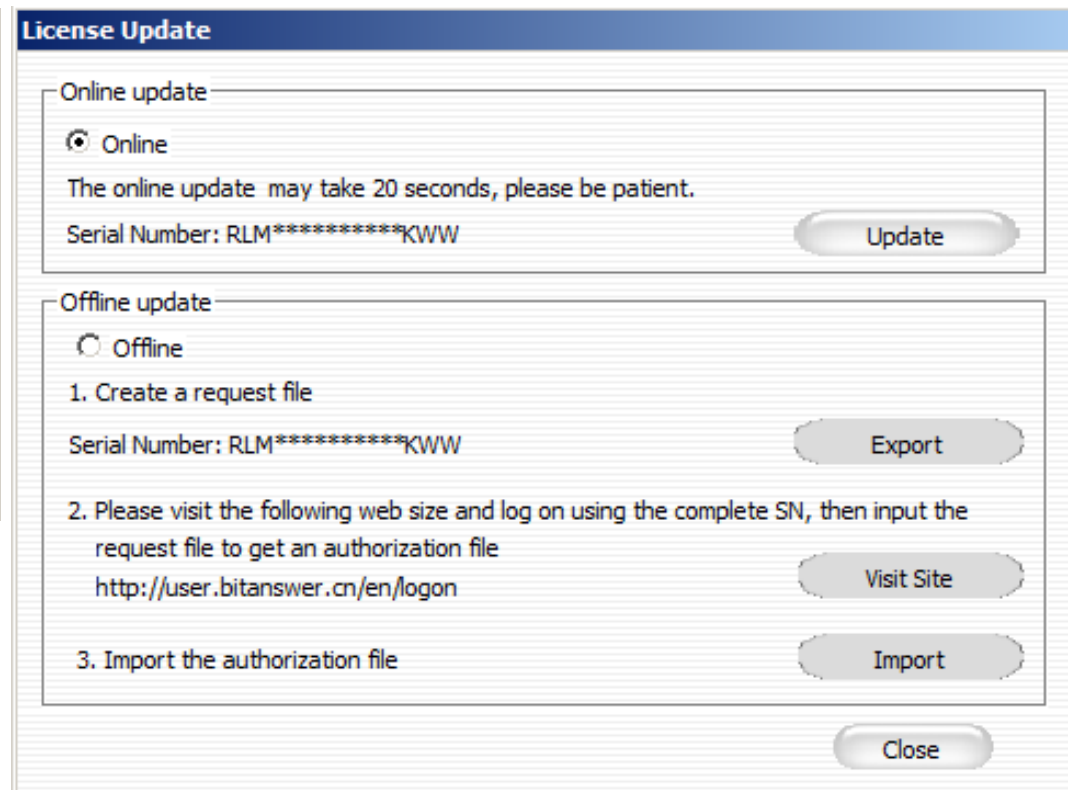
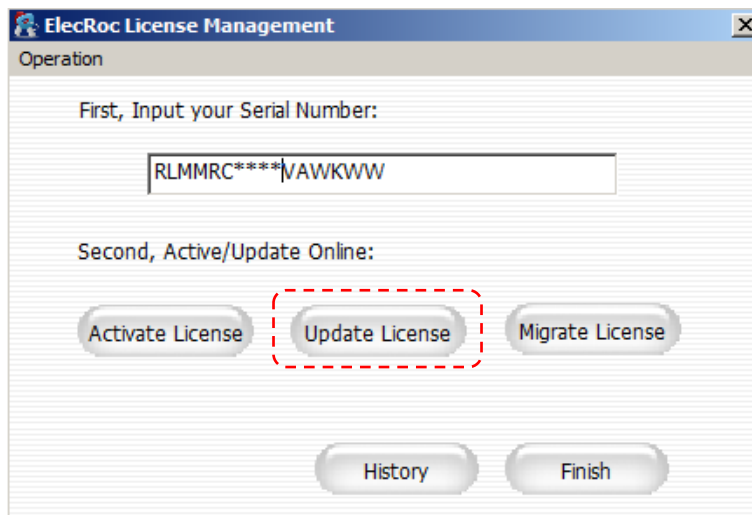


- Step 6. Click **Finish** to close the window.

Update License

Update License

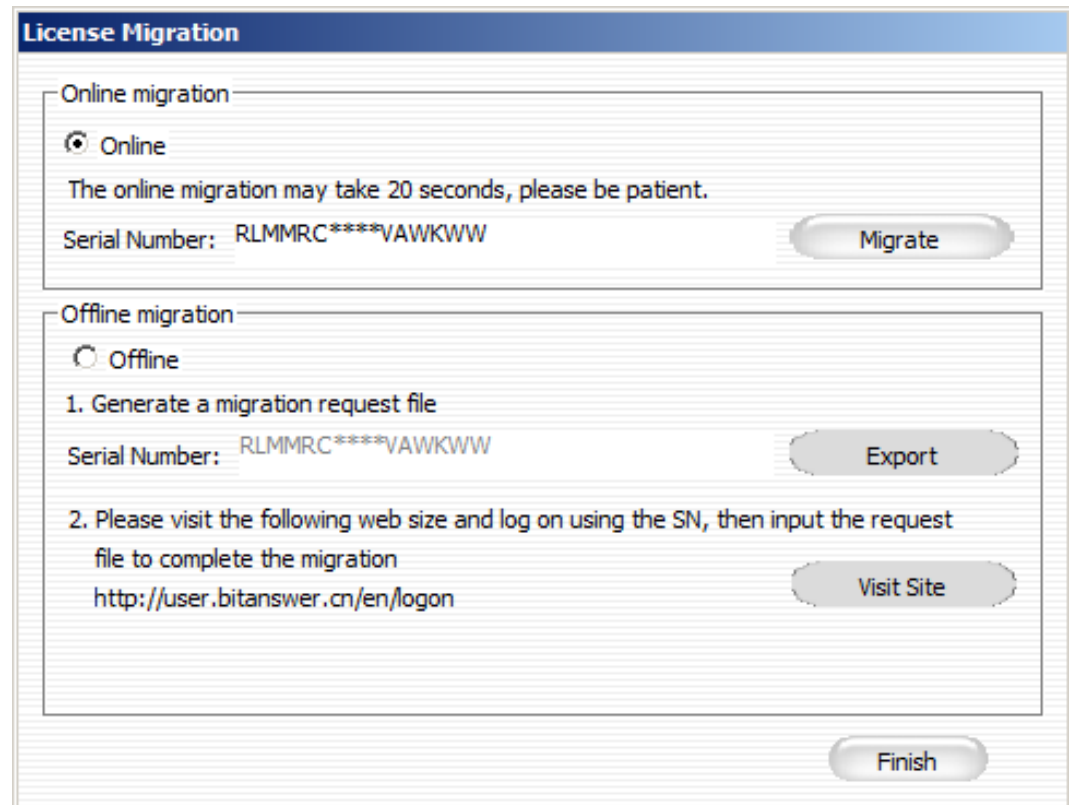
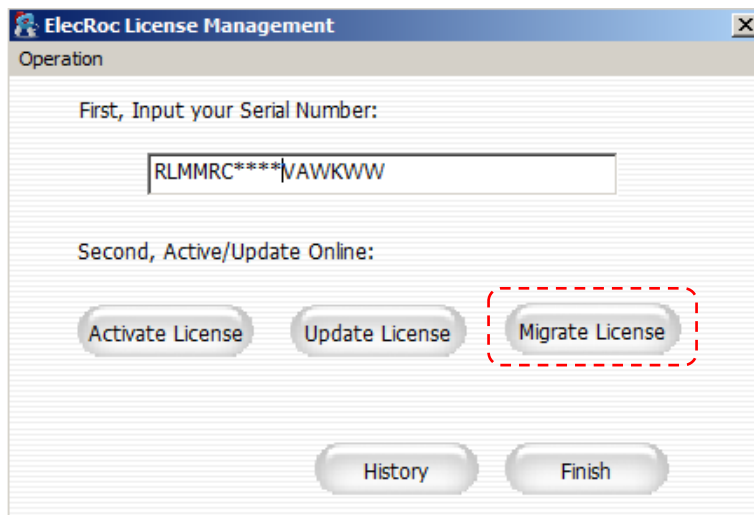
- Run the **License Management Utility** tool from **Start** menu of Windows.
- Click **Update License**.
- The operation is the same as **Activate License**.



Migrate License

Migrate License

- Run the **License Management Utility** tool from **Start** menu of Windows.
- Click **Migrate License**.
- The operation is the same as **Activate License**.



www.foundereagle.com

Beijing Founder Electronics CO., Ltd.

Thanks



No.9, 5th Street, Shangdi Information Industry Base Haidian District, Beijing 100085, China.

Tel: +86 10 6298 1440 Fax: +86 10 6298 1440